

VINORAGETM

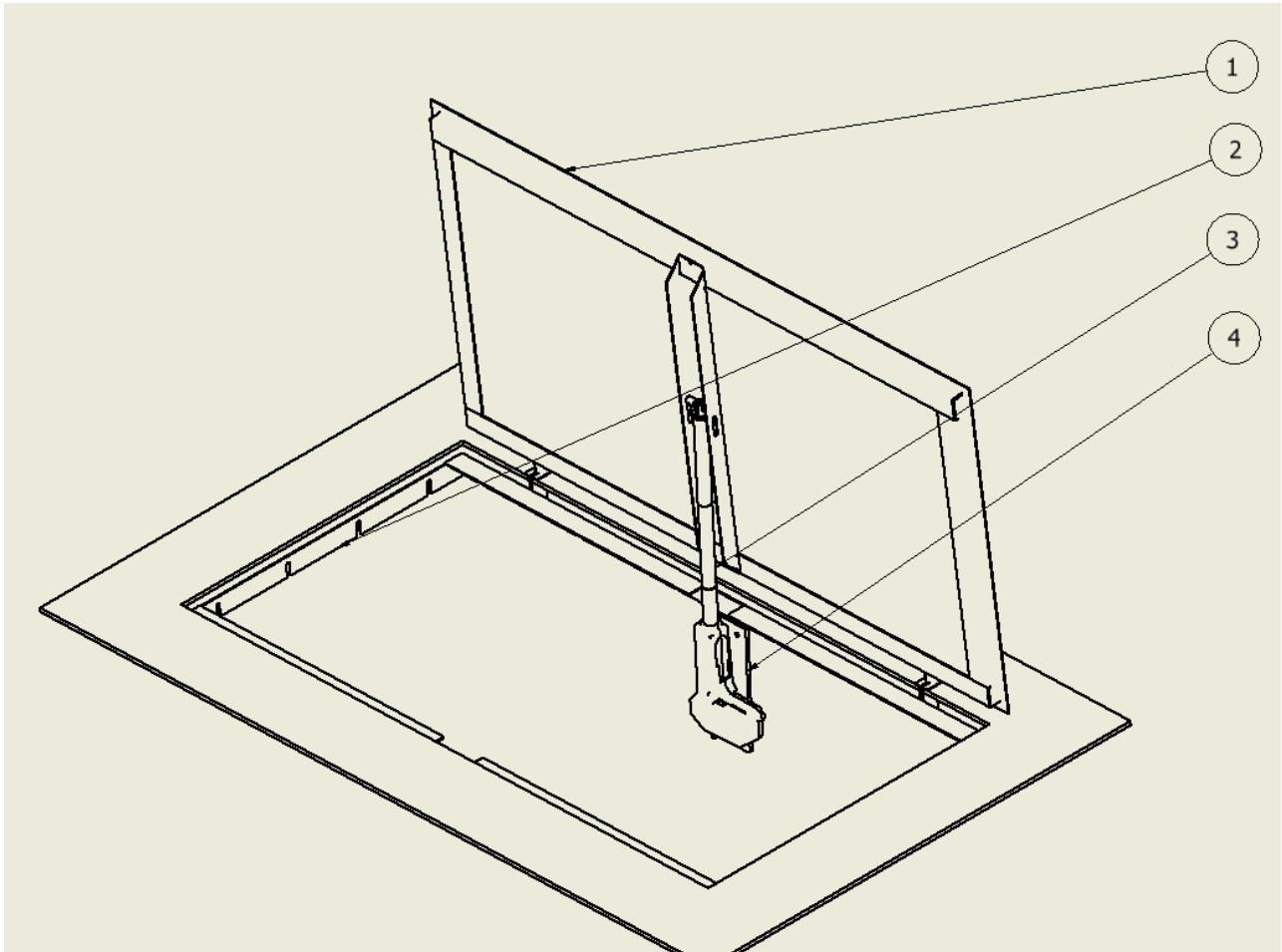
Installation guide



Separate glass door

VINORAGETM

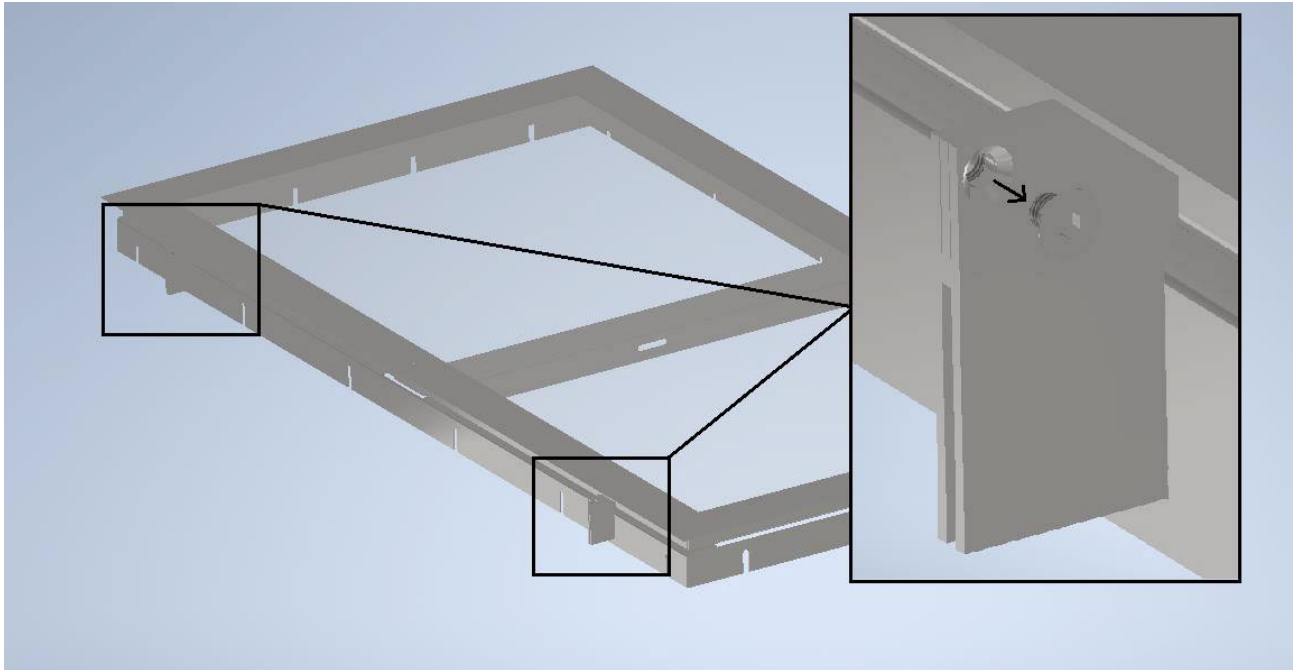
The door is received as shown in the image below - This guide refers to the position numbers and their names as indicated in the image.



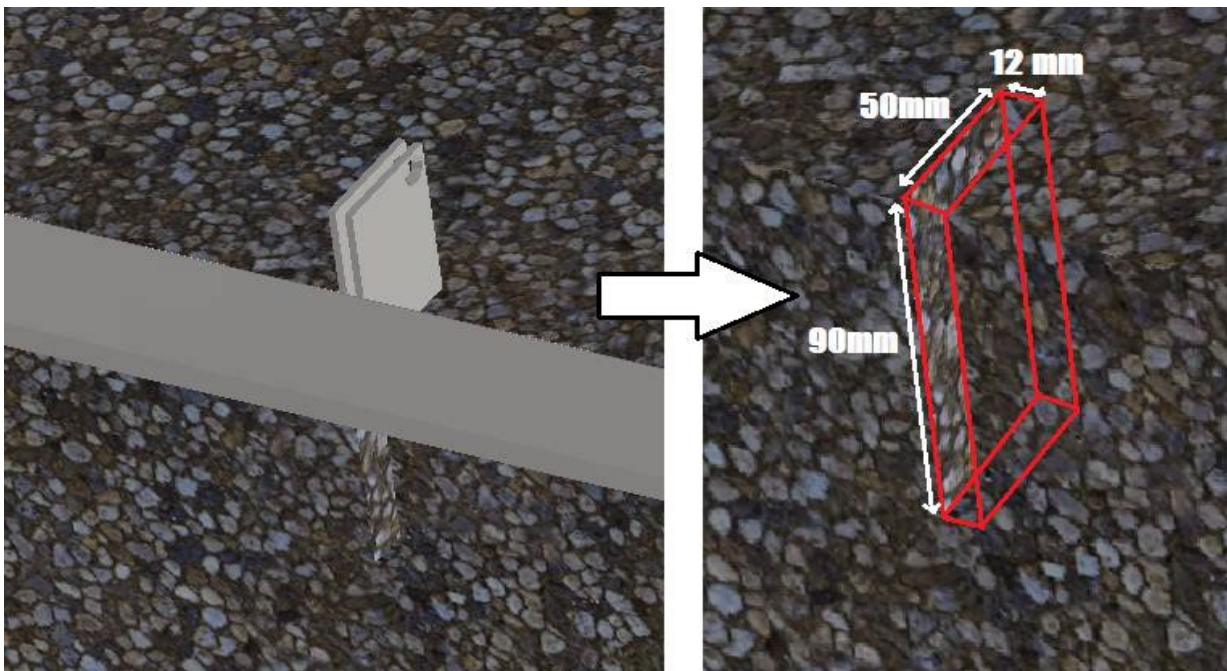
- 1. - Upper frame
- 2. - Lower frame
- 3. - Actuator/Motor
- 4. - Motor mount

VINORAGETM

The door is delivered assembled, but installation is made significantly easier by removing the 6mm countersunk screws located in the brackets at the back of the frame, as shown in the picture below. Save the screws, they will be used later.



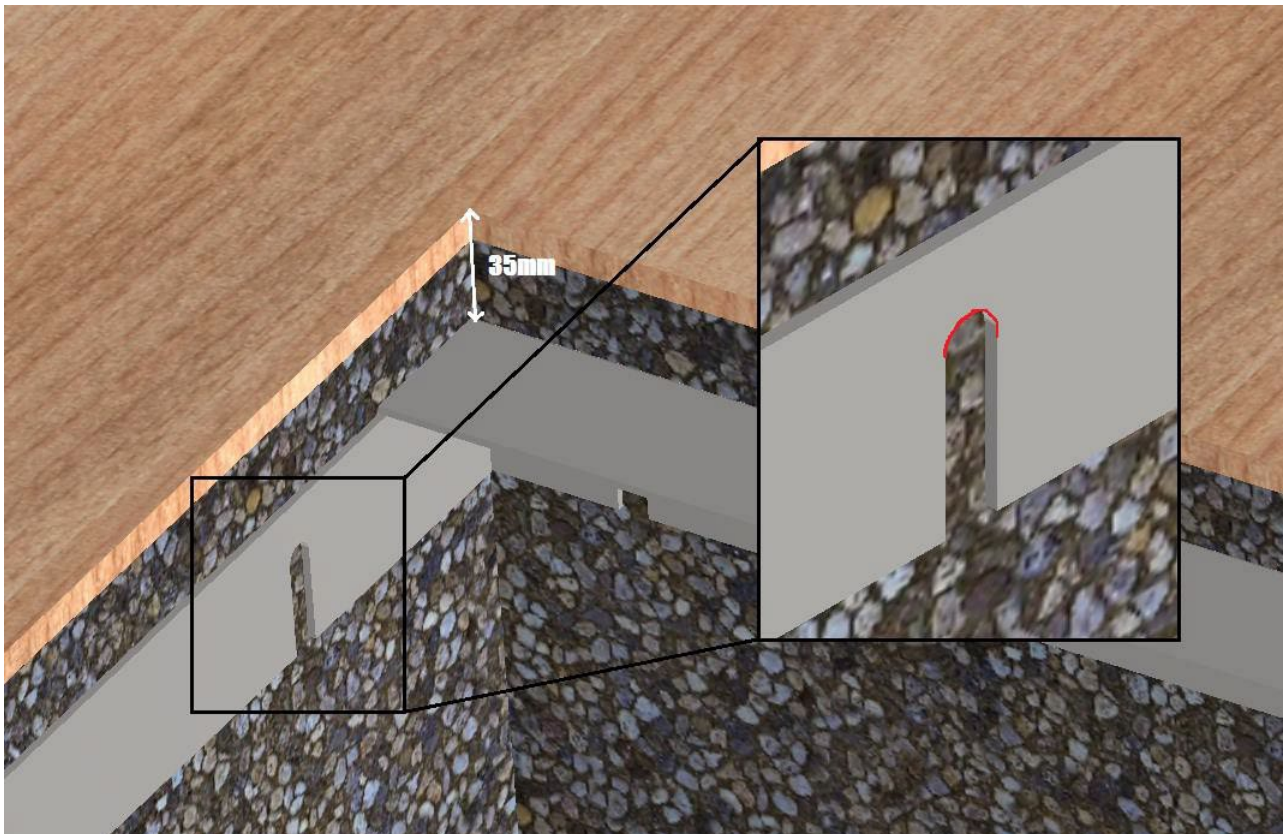
The lower frame is placed over the hole where the frame is to be mounted, where you then mark the slots for hinges - The dimensions of the slots are shown in the picture below. 12mm wide, 50mm deep and 90mm high respectively. Remember that the slots are also needed in the floor covering itself.



VINORAGETM

After the slots are cut, remove the sub-frame again and lay the floor. The frame is then lowered back into the hole to achieve a length of 35mm from the top edge of the floor to the top edge of the lower frame. The holes are marked as shown in the picture below, so that the installation of load-bearing struts can be carried out and the frame can be installed into the already existing molding. The marking is done by marking the arch, which is illustrated in red in the image below.

Remember that the width of the slotted holes is 10mm.

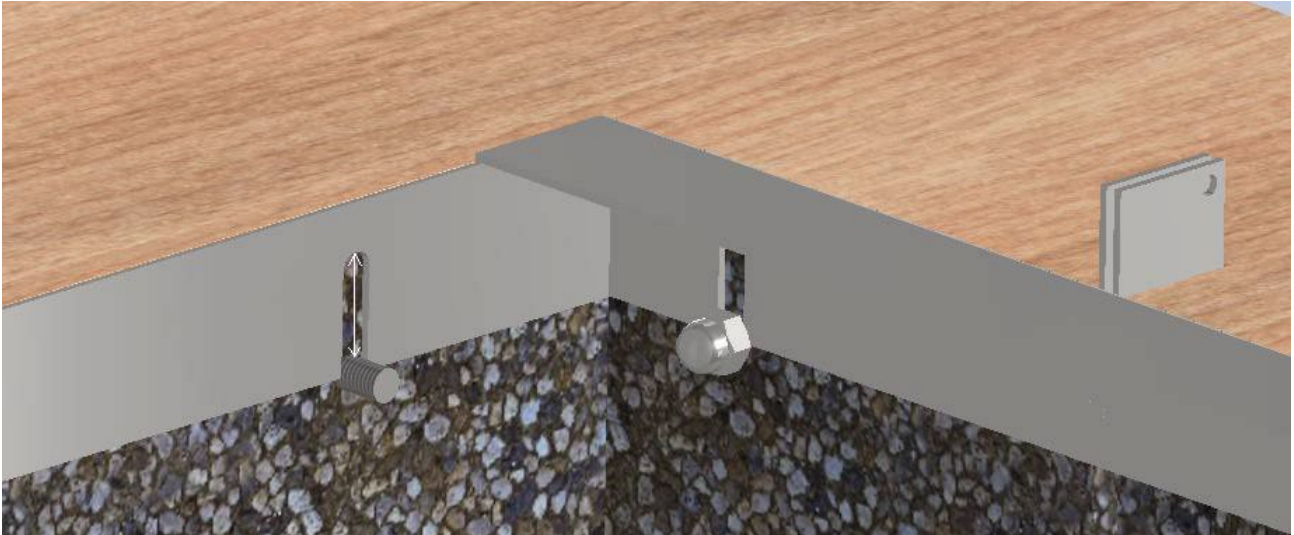


Before attaching the frame, the motor control unit must be installed.

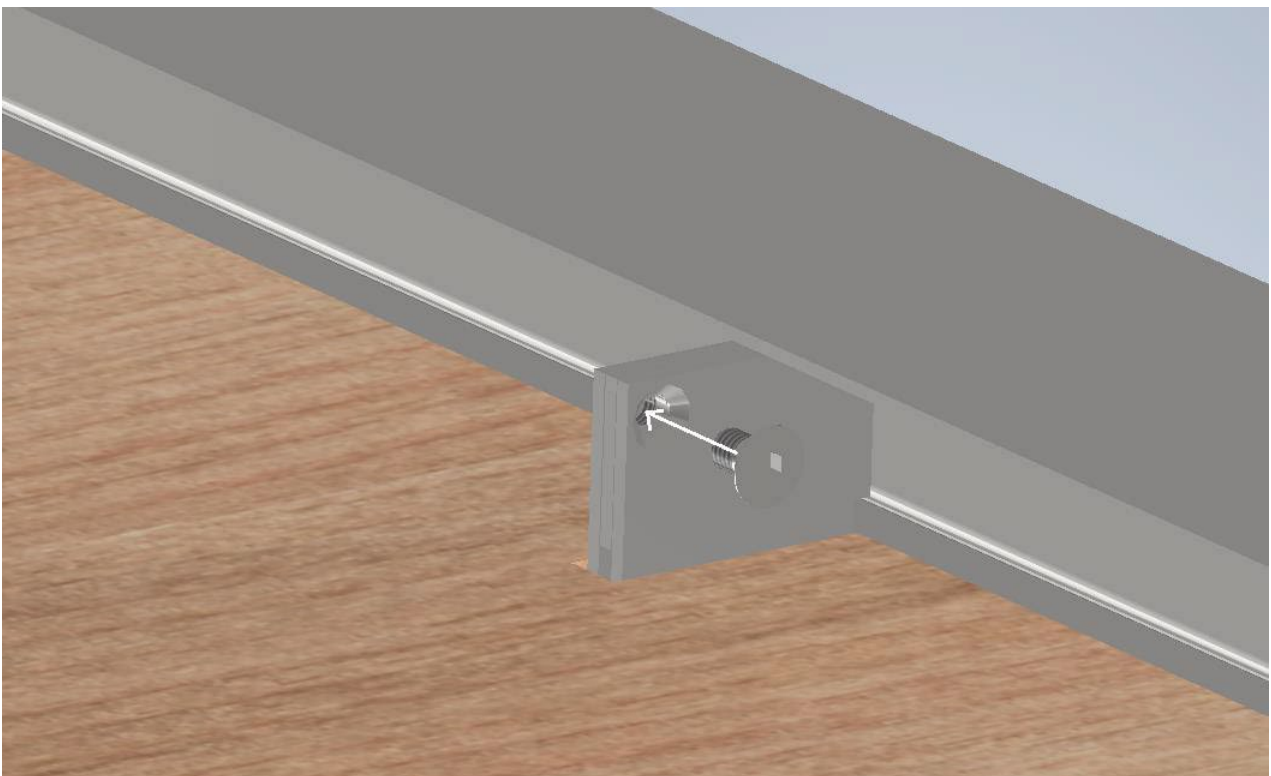
On delivery there are 3 cables mounted on the control unit. One for low voltage (open/close), one for 230 Volt power supply, and one cable mounted on the motor. The control unit must be positioned so that it can reach the motor. The switch for opening/closing is mounted where you want it to be placed. The low-voltage cable for the switch for opening and closing the door is fitted on delivery. Lastly, connect 230 volts to the control unit.

VINORAGETM

After the controller is fully assembled, lightly clamp the lower frame to the installed stays. Place the lower frame at the maximum height of the slotted holes and clamp it as shown in the image below. Remember to tighten the frame all the way around.



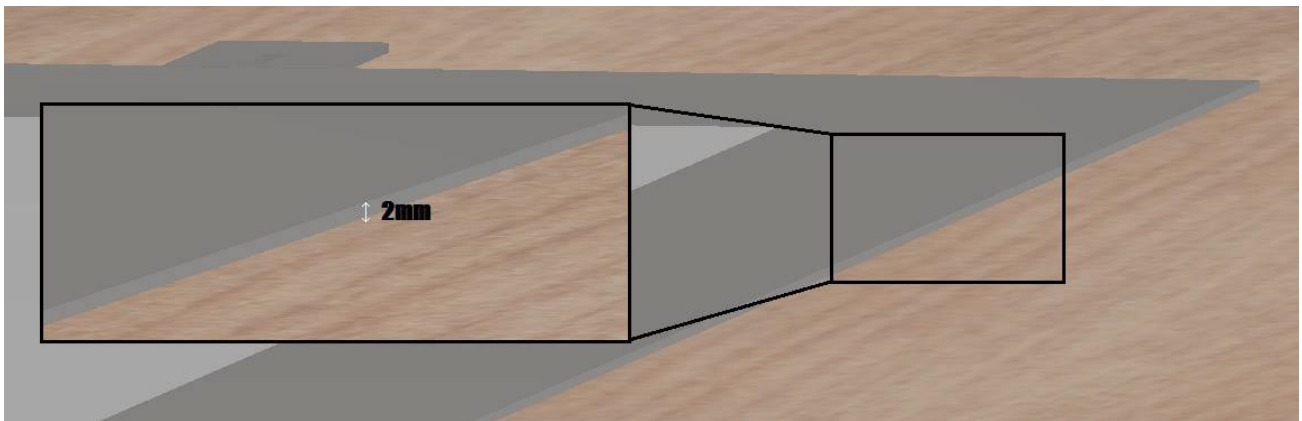
The upper frame is now reinstalled with the same previously removed screws, as shown in the image below.



VINORAGETM

After the upper frame is reinstalled, open the door and stand on the underside of the door so that there is access to the slightly tightened nuts on the stays. Then do the following in the order mentioned:

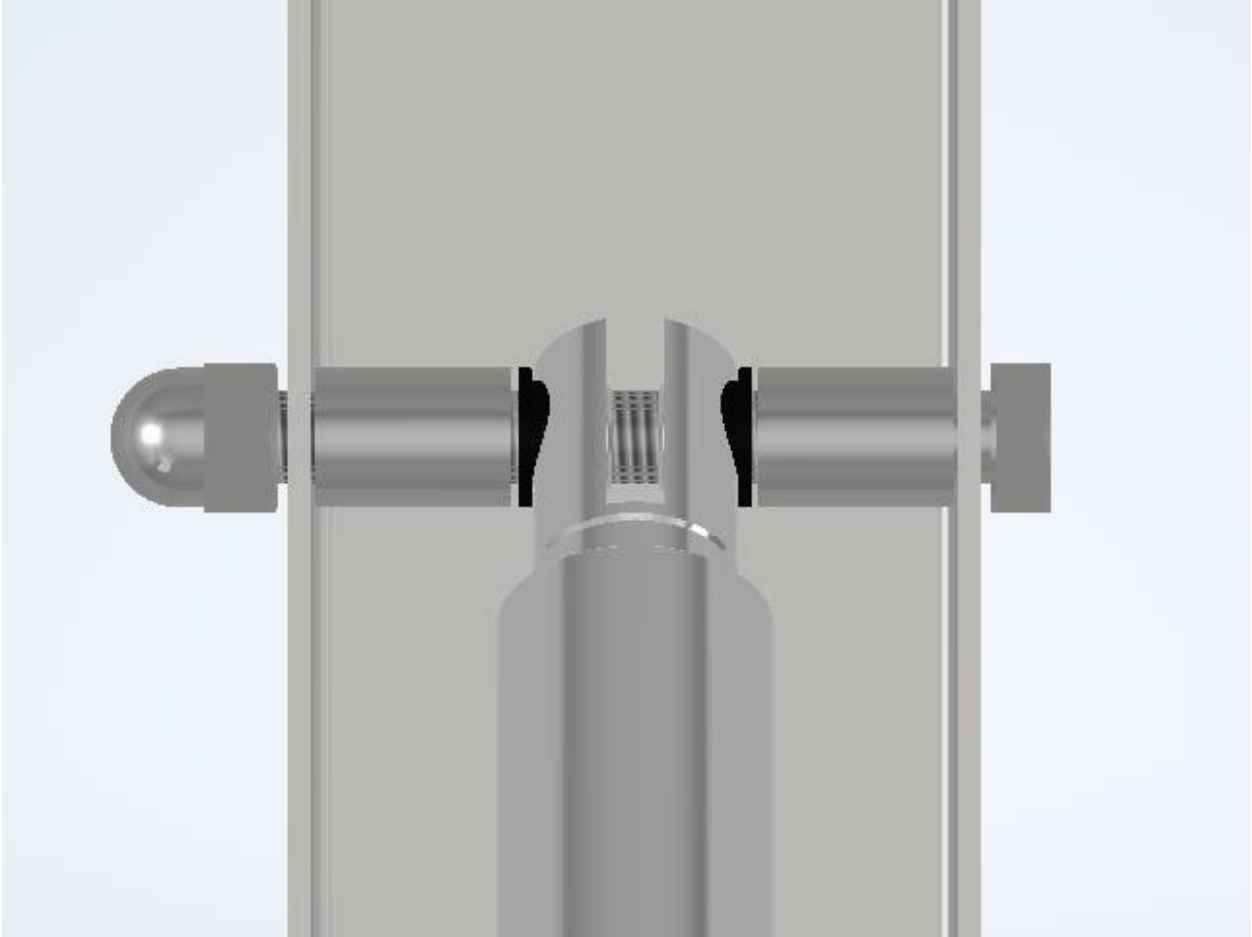
1. Close the door again (with a person on the underside).
2. Loosen the nuts on the lightly tightened struts again.
3. Lower the upper frame so that it rests on the floor and is flush with the floor edge (see picture).



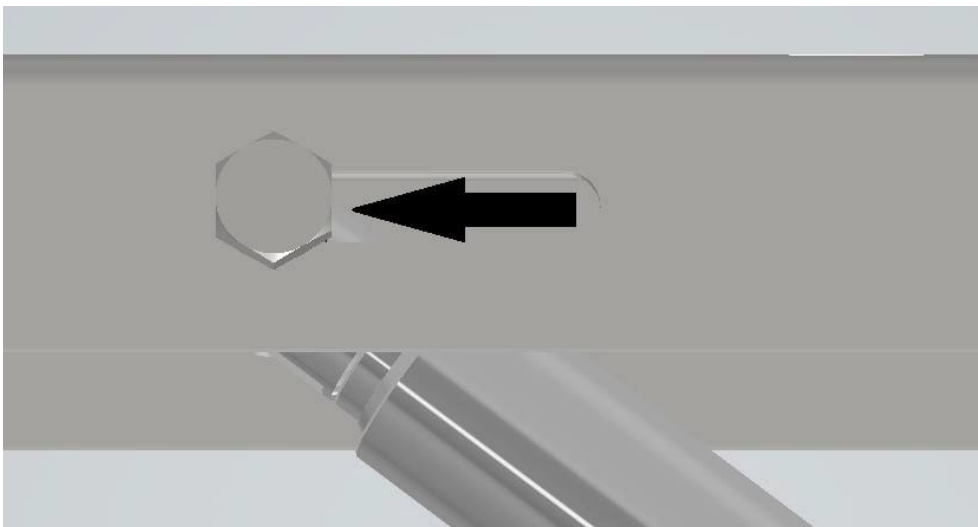
4. Tighten the nuts on the rod completely.
5. The door is opened and the person underneath is helped up.

VINORAGETM

The frame is now mounted, now it's time to adjust the motor. This is done as follows. The motor arm is clamped to the upper frame boom, with spacers on each side of the actuator arm as shown in the picture below



Then push the bolt **as far from** the hinge side of the frame as possible.



VINORAGETM

The included motor mount is now mounted on the opposite side of the motor to match the image below. **REMEMBER** to make sure that the actuator arm is fully compressed and again place the bolt furthest from the motor mount. Once this is done, hold the motor bracket up against the molded cover and mark the holes as shown in the image below.



Drill out the 2 marked holes and install the appropriate clamping of the motor bracket. Once the bracket is mounted, it is important to test the installation to ensure that everything works properly.

VINORAGETM

When the door is installed and opened to the maximum, it is important that the door does not tilt. This is ensured by measuring how many degrees the door is at when it is fully installed. It is important that the door does **NOT** exceed 85° as this can cause the door to tip to the wrong side - See image for explanation.



When it is ensured that the open door does not exceed max 85°, the installation of the door is complete.

Congrats on your new product from

VINORAGETM